

L I N E S HEADBAND



RUST KNITWEAR & DESIGN

by Simone

The Lines Headband is a chunky & very warm headband. It's knitted flat, then sewn together to a twist at the end. It is decorated by a simple but very effective repeating line pattern. The instructions are all charted, however I will explain the first two rows written to give you an idea of how to work the chart.

Please read through the pattern carefully before starting.

You will find the abbreviations section at the end of this document.

Needed

One skein of WOOLADDICTS HOPE (90m/100g)

8mm (US 11) knitting needles (double pointed or circular, whatever you're most comfortable with)

Tapestry needle to weave in ends

Cable Needle

Sizes

One size fits most.

But please check if the headband fits around your head (it should be stretched a bit) before you cast off.

Gauge

12x14sts = 10x10cm worked flat in stockinette on 8mm knitting needles

Let's get started!

Cast on 16 sts on your 8mm knitting needles.

On every odd row you will knit in pattern. On every even row you will knit 2 edge stitches on each side and purl the rest.

Here are the first two rows as a written instruction:

Row 1: k5, 2stLC, k2, 2stRC, k5

Row 2: k2, p12, k2

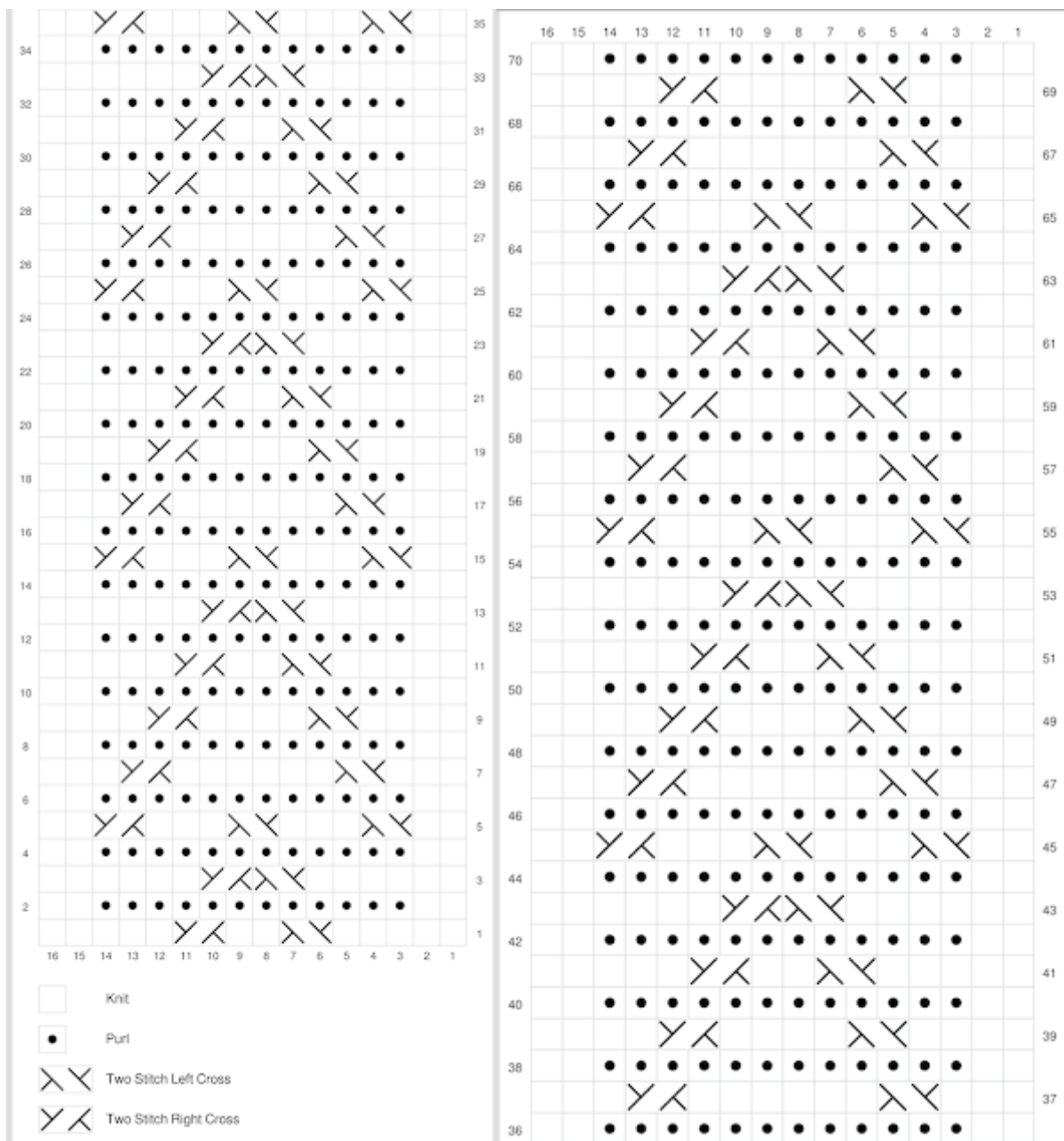
Continue with the knitting chart that follows.

Knitting Chart

Knit the chart as following:

Knit what's on the left side first. Read the chart from right to left and bottom to top. The symbols are explained at the bottom of the chart on the left. **The knitting chart shows front- and backside of your knitting!**

NOTE: If your piece measures more than 11 cm after row 16 you have to use smaller sized knitting needles. If it measures less than 11 cm after row 16 you have to use bigger sized knitting needles.



Cast off on row 70. Cast off on the WS (row 70) to not break the pattern on the RS. Cut the thread but leave it long enough to sew the two sides together.

Twist:

The images below show how you can make the twist at the end.

Step 1:



Lay your work down with the RS facing upwards. Now fold the bottom half up and align half of the top side with half of the bottom side, as shown in the picture.

Step 2:



Now fold half of the bottom side around the top side from left to right.

Step 3:



Fold half of the top side around the bottom side from right to left.

Step 4:



Now sew these four parts together. Be sure to meet all four parts when sewing it together, otherwise there will be holes in that section.

Sew in all ends and turn your work on the RS.
Done!

Feel free to share your version of the
Lines Headband on Instagram
using the hashtag #linesheadband and
tagging me in the photo with @rust_knitwear .

Have fun knitting!
I'm excited to see your version.

Abbreviations

st = stitch

sts = stitches

k = knit stitch

p = purl stitch

RS = right side of your work

WS = wrong side of your work

2stLC = two stitch left cross, meaning: Slip 1 stitch onto a cable needle or safety pin and place it in front of your work. Knit the next stitch. Return the stitch you had on hold to the left needle and knit it.

2stRC = two stitch right cross, meaning: Slip 1 stitch onto a cable needle or safety pin and place it behind your work. Knit the next stitch. Return the stitch you had on hold to the left needle and knit it.

This pattern is for personal use only. It must not be sold, distributed or copied. Any products that have been made by using this pattern systematically are not to be sold. All rights reserved. Excepting errors and changes.