

# **LINES LOOP**



**RUST KNITWEAR & DESIGN**  
by Simone

## **Please read through the pattern carefully before starting.**

The Lines Loop is a chunky & very warm loop scarf. It's knitted flat, then sewn together at the end. It features a simple repeating line pattern that is worked by using cross stitches.

The instructions are all charted, however I will explain the first two rows written to give you an idea of how to work the chart.

**You will find the abbreviations section at the end of this post.**

### **Needed:**

1-2 skeins of *Wooladdicts Hope* (90m/100g) or similar

8mm (US 11) knitting needles (double pointed or circular, whatever you're most comfortable with)

Tapestry needle to weave in ends

Cable needle or safety pin

### **Sizes**

One size fits most (Width: 33cm, Length before sewing together: 60cm)

Please check if the loop has a length that you like before casting off.

### **Gauge**

12x14sts = 10x10cm worked flat in stockinette on 8mm knitting needles

### **Let's get started!**

Cast on 40 sts on your 8mm knitting needles.

On every odd row you will knit in pattern. On every even row you will knit 2 edge stitches on each side and purl the rest.

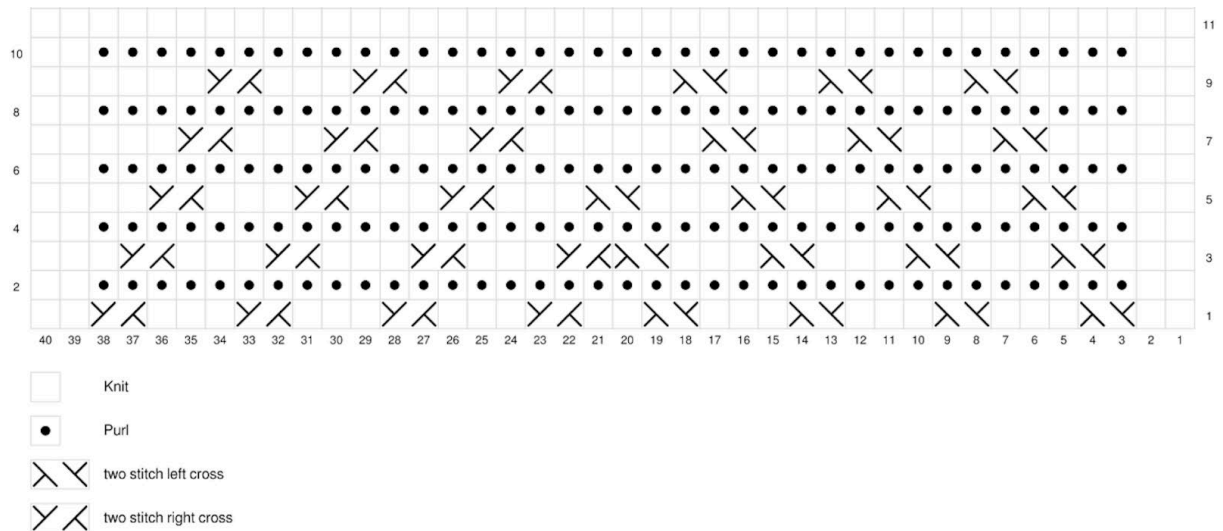
Here are the first two rows as a written instruction:

Row 1: k2, 2stLC, k3, 2stLC, k3, 2stLC, k3, 2stLC, k2, 2stRC, k3, 2stRC, k3, 2stRC, k3, 2stRC, k2

Row 2: k2, p36, k2

### **Knitting Chart**

Read the charts from right to left and bottom to top. The symbols are explained at the bottom of the chart on the left. The chart shows both the right and wrong side of your knitting. The odd rows correspond to the right side of your knitting, the even rows to the wrong side. The symbols are explained at the bottom of the first chart. Check the abbreviations section for further details.



Repeat **rows 1-9** for a total of 10 times.

Cast off on the WS to not break the pattern on the RS. Cut the thread but leave it long enough to sew the two sides together (around 3 times the length of the part that has to be sewn together).

Fold the loop in half with the parts that have to be sewn together facing you. The right side should be on the outside. Now sew it together with an invisible horizontal seaming method.

If you're not familiar with this method, here is a great youtube video tutorial explaining said method:

<https://www.youtube.com/watch?v=QTmEkq-X98w>

(\*I (RUST Knitwear) am in no way associated to this video.)

Sew in all ends and turn your work on the RS.

Done.

Washing/blocking your work is recommended.

## **Abbreviations**

st = stitch

sts = stitches

k = knit stitch

p = purl stitch

RS = right side of your work

WS = wrong side of your work

2stLC = two stitch left cross, meaning: Slip 1 stitch onto a cable needle or safety pin and place it in front of your work. Knit the next stitch. Return the stitch you had on hold to the left needle and knit it.

2stRC = two stitch right cross, meaning: Slip 1 stitch onto a cable needle or safety pin and place it behind your work. Knit the next stitch. Return the stitch you had on hold to the left needle and knit it.

This pattern is for personal use only. It must not be sold,  
distributed or copied. Any products that have been made  
by using this pattern systematically are not to be sold.  
All rights reserved. Excepting errors and changes.

Feel free to share your version of the  
*Lines Loop* on Instagram  
using the hashtag **#linesloop** and  
tagging me in the photo with **@rust\_knitwear** .

Have fun knitting!  
I'm excited to see your version.