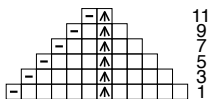
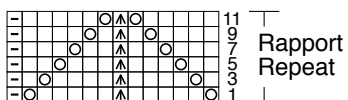


MUSTER IV /
PATTERN IV



- = keine M
- ▢ = 1 M li
- = 1 M re
- ⊙ = 1 U
- ▲ = 1 dopp übz Abn
(1 M abh, 2 M re zus-str, die abgeh
M über die zus-gestr M ziehen)

MUSTER III /
PATTERN III



- = no st
- ▢ = p1
- = k1
- ⊙ = 1 yo
- ▲ = sl 1, k2 tog, pss0

MUSTER II
PATTERN II

