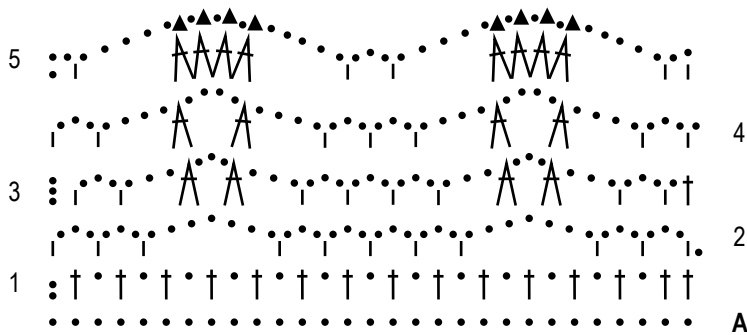


# 188-60-haek

MUSTER I / POINT I /  
PATTERN I / STEKENPATROON I



- ˘ = KM / sl / demi ms / halve vaste
- = Lftm / ch st / ml / losse
- | = fM / sc / ms / vaste
- † = Stb / dc / br / St
- ▲ = 1 Picot (3 Lftm, in die 1. Lftm 1 KM)  
1 Picot (3 sc, in the 1<sup>th</sup> ch 1 sl)  
1 Picot (3 ml, dans la 1<sup>re</sup> ml 1 demi ms)  
1 Picot (3 losse, in de 1ste losse 1 halve vaste)
- A = 2 Stb zus häk / 2 br croch ens /  
2 dc crochet tog / 2 St samen haken
- A = Anfang / beginning / au début / begin
- ‡ = D-Stb / tr / dble br / dubbel St

MUSTER II / POINT II /  
PATTERN II / STEKENPATROON II

