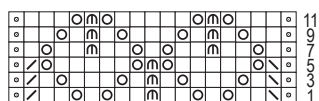


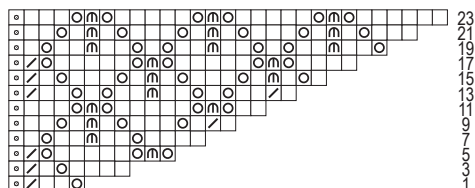
205-67_str

MUSTER I / POINT I / PATTERN I / STEKENPATROON I

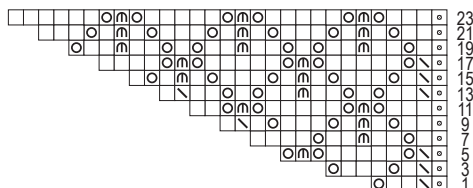


8 M / 8 m /
8 sts / 8 st

MUSTER Ia / POINT Ia / PATTERN Ia / STEKENPATROON Ia



MUSTER Ib / POINT Ib / PATTERN Ib / STEKENPATROON Ib



- ⊙ = 1 U
- = 1 M re
- ▤ = 2 M re zus-str
- ▥ = 1 üz Abn (1 M abh, 1 M re,
und die abgeh M über die gestr M ziehen)
- ⊠ = 1 Rdm
- ⊞ = 2 M zus re abh, 1 M re, die abgeh
M über die gestr M ziehen

- ⊙ = 1 yo
- = k1
- ▤ = k2 tog
- ▥ = sl 1, k1, psso
- ⊠ = 1 edge st
- ⊞ = sl 2 sts k-wise, k1, psso

- ⊙ = 1 jeté
- = 1 m end
- ▤ = 2 m ens à l'end
- ▥ = 1 surjet (gl 1 m, tric 1 m à l'end
et rab la m gl par-dessus)
- ⊠ = 1 m lis
- ⊞ = gl 2 m ens à l'end, 1 m end
et rab les m gl sur cette m

- ⊙ = 1 omslag
- = 1 r
- ▤ = 2 st r samen br
- ▥ = 1 overhaling (1 afh, 1 st r br,
de afgeh st over de gebr st halen)
- ⊠ = 1 kantst
- ⊞ = 2 r st samen afh, 1 r st br, de afgeh
st over de gebr st halen