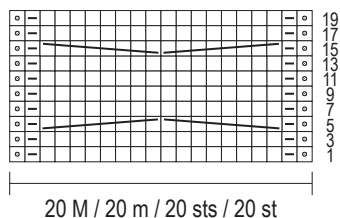


# 216-33\_str


## MUSTER I / PATTERN I / POINT I / STEKENPATROON I




◻ = 1 Rdm

◻ = 1 M re

◻ = 1 M li


 = 8 M nach li kreuzen (4 M auf 1 Hilfs-N vor die Arb legen, die folg 4 M re, dann die M der Hilfs-N re str)


 = 8 M nach re kreuzen (4 M auf 1 Hilfs-N hinter die Arb legen, die folg 4 M re, dann die M der Hilfs-N re str)

◻ = 1 m lis

◻ = 1 m end

◻ = 1 m env


 = croiser 8 m vers la gauche (gl 4 m sur 1 aig auxil par-devant, tric à l'end les 4 m suiv, puis les m de l'aig auxil à l'end)


 = croiser 8 m vers la droite (gl 4 m sur 1 aig auxil par-derrrière, tric à l'end les 4 m suiv, puis les m de l'aig auxil à l'end)

◻ = 1 edge st

◻ = k1

◻ = p1


 = cross 8 sts towards left (put 4 sts on st holder held in front of work, k the foll 4 sts, then k the sts on st holder)

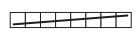
 = cross 8 sts towards right (put 4 sts on st holder held in back of work, k the foll 4 sts, then k the sts on st holder)

◻ = 1 kantst

◻ = 1 r

◻ = 1 av

 = 8 st naar links kruisen (4 st op hulpnlid voor werk, de 4 volg st r br, daarna de st van de hulpnlid r br)

 = 8 st naar rechts kruisen (4 st op hulpnlid achter werk, de 4 volg st r br, daarna de st van de hulpnlid r br)