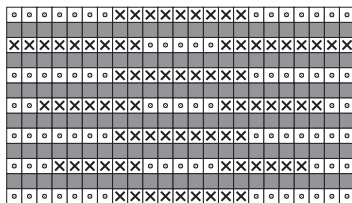


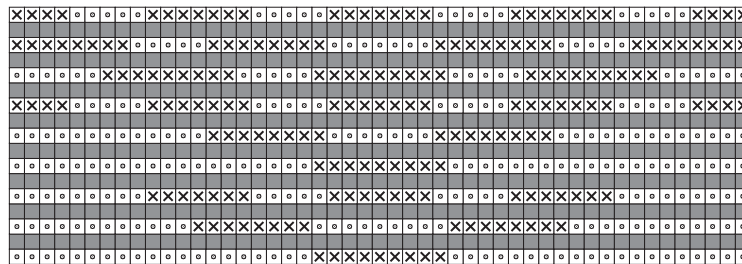
225-22_str

Ärmel
sleeves
manches
mouwen



↑
Mitte
center
milieu
middel

Vorder- und Rückenteil
front- and backpart
devant et dos
voor- een rugpand



↑
Mitte
center
milieu
middel

- ☒ = 1 Stern über 3 M und 2 R (Mohair Luxe)
- ◻ = 3 M und 2 R im Muster II (Mohair Luxe)
- = 3 M und 12 R im Muster II (Asia)

- ☒ = 1 étoile environ 3 m et 2 rg (Mohair Luxe)
- ◻ = 3 m et 2 rg en point II (Mohair Luxe)
- = 3 m et 12 rg en point II (Asia)

- ☒ = 1 star across 3 sts and 2 rows (Mohair Luxe)
- ◻ = 3 sts and 2 rows in pattern II (Mohair Luxe)
- = 3 sts and 12 rows in pattern II (Asia)

- ☒ = 1 ster over 3 st en 2 rijen (Mohair Luxe)
- ◻ = 3 st en 2 rijen in patroon II (Mohair Luxe)
- = 3 st en 12 rijen in patroon II (Asia)