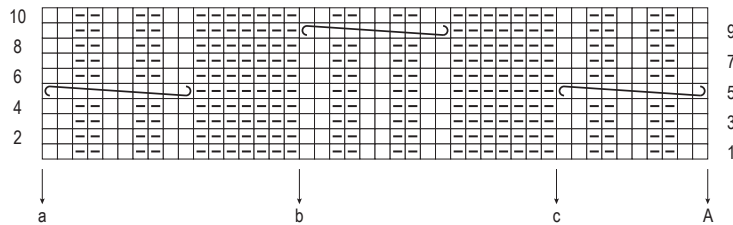



235-11_str

MUSTER II / PATTERN II / POINT II / STEKENPATROON II




□ = 1 M Vorders re, Rückts li

▣ = 1 M Vorders li, Rückts re

 = 10 M auf die Spiel-N legen, den Faden von hinten 2x um diese M wickeln und ohne zu str auf die re N legen


□ = 1 m end sur l'end, env sur l'env

▣ = 1 m env sur l'end, end sur l'env

 = placer 10 m sur 1 aig du jeu d'aig, enrrouler 2x le fil autour de ces m depuis l'arrière du trav et replacer ces m sur l'aig droite sans les tric

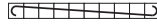
□ = on RS k1, on WS p1

▣ = on RS p1, on WS k1

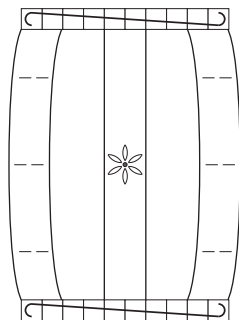
 = place 10 sts on double-pointed needle, from the back wind yarn twice around these sts and place on RH needle without knitting

□ = 1 st r op goede kant, av op av kant

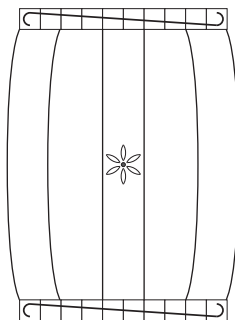
▣ = 1 st av op goede kant, r op av kant

 = 10 st op de kousenbrld nemen, de draad van achteraan 2x om deze st wikkelen en zonder te br op de rechternld nemen

MUSTER IV / PATTERN IV / POINT IV / STEKENPATROON IV



MUSTER IVa / PATTERN IVa / POINT IVa / STEKENPATROON IVa



-- = rosa / pink / rose / roze

• = grün / green / vert / groen

◊ = altrosa